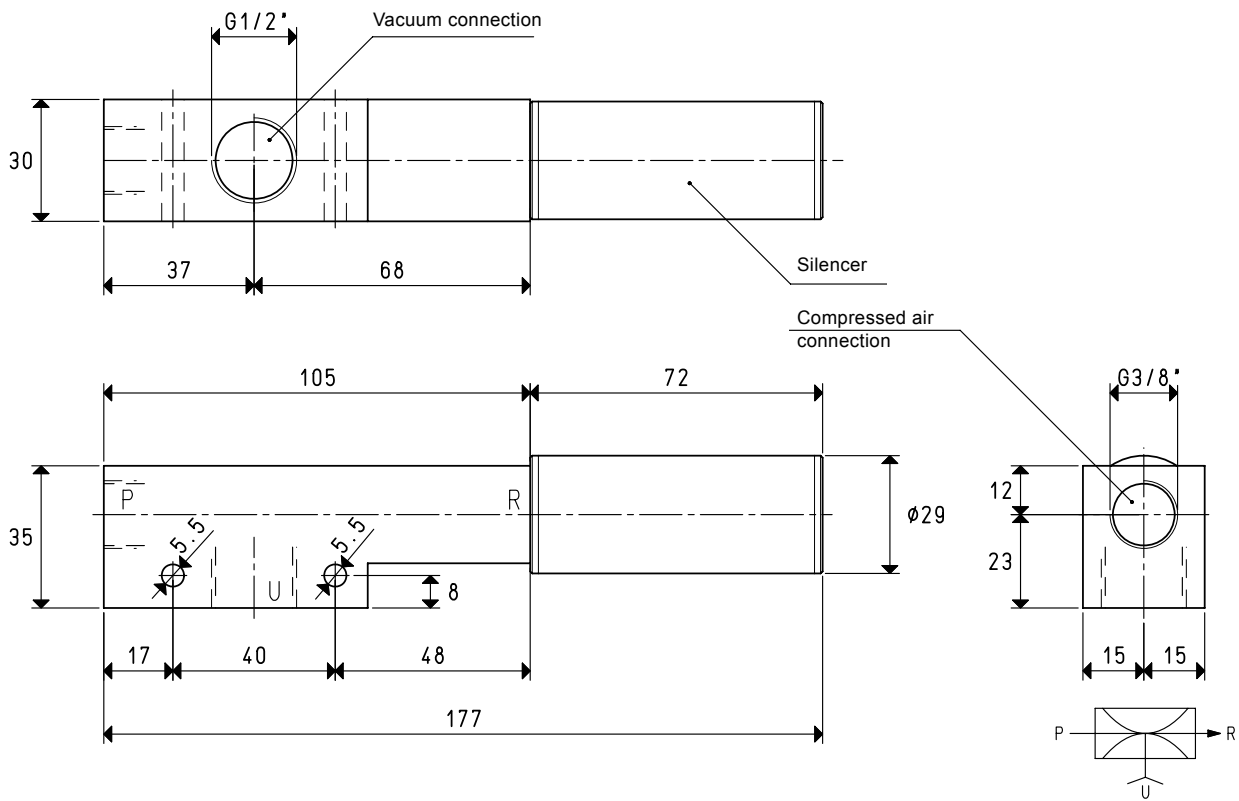


SINGLE-STAGE VACUUM GENERATORS 15 05 10 SX



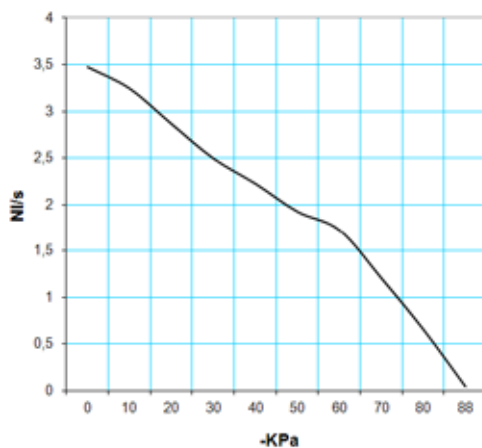
P=COMPRESSED AIR CONNECTION R=EXHAUST U=VACUUM CONNECTION

Art.	15 05 10 SX			
Quantity of sucked air	cum/h	12	12.2	12.5
Max. vacuum level	-kPa	40	60	88
Final pressure	mbar ass.	600	400	120
Supply pressure	bar	2	3	3.4
Air consumption	NI/s	3.7	5	5.5
Working temperature	°C			-20 / +80
Noise level	dba			63
Weight	g			306
Spare parts				
Silencer	art.			SSX 3/8"

Note: All the vacuum data indicated in the table are valid at the normal atmospheric pressure of 1013 mbar and are obtained with a constant supply pressure.

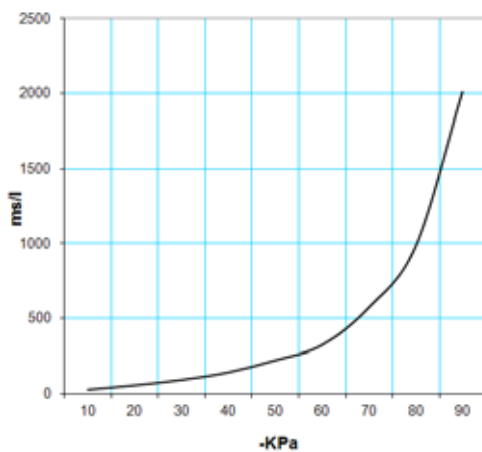
Conversion ratio: inch = $\frac{\text{mm}}{25.4}$; pounds = $\frac{\text{g}}{453.6} = \frac{\text{Kg}}{0.4536}$

GAS-NPT thread adapters available at page 1.117



AIR CAPACITY (NI/s) AT DIFFERENT VACUUM LEVELS (-KPa)

Generator art.	Supply press. bar	Air consumption NI/s	Air capacity (NI/s) at different vacuum levels (-KPa)											Max. vacuum level -KPa
			0	10	20	30	40	50	60	70	80	88		
15 05 10 SX	3.4	5.5	3.47	3.24	2.86	2.49	2.22	1.92	1.72	1.20	0.65	0.04	88	



EVACUATION TIME (ms/l=s/m³) AT DIFFERENT VACUUM LEVELS (-KPa)

Generator art.	Supply press. bar	Air consumption NI/s	Evacuation time (ms/l = s/m ³) at different vacuum levels (-KPa)										Max. vacuum level -KPa
			10	20	30	40	50	60	70	80	85		
15 05 10 SX	3.4	5.5	25	54	90	140	220	320	570	980	2012	82	